

Mortgage Bench Case Study: Praxis

praxis

Based in central Birmingham and with a network of remote offices across the country, Praxis is one of the UK's largest and longest running mortgage packagers.

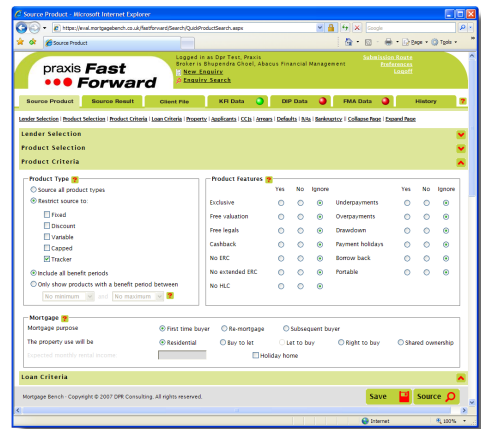
Like many companies who have grown organically over a long period, Praxis had invested heavily in internally developed IT systems to support the expanding organisation. In due course they found that the maintenance associated with keeping those systems running was constraining their ability to be agile, particularly against a background of substantial change and opportunity in the mortgage arena.

Praxis had a vision of using technology in new ways that would add substantial value to their broker proposition, and provide a more streamlined and flexible solution for the future. However they also recognised that to succeed they needed to focus on their core expertise of mortgage packaging and bring in a technology partner to build and deliver a best-of-breed solution.

Praxis chose DPR as their technology partner and have now implemented the full Mortgage Bench suite across the organisation.

This includes a web-based mortgage sourcing

solution which Praxis have named 'Fast Forward', and a fully integrated implementation of DPR's back office system Mortgage Bench Plus, which drives processing efficiency through intelligent workflow, document management and electronic links to third parties including property valuers and card payment processors.



Formed in 1996, DPR specialises exclusively in developing mission critical enterprise solutions for lenders and intermediaries in the UK mortgage arena. DPR's mission is to drive improved operational effectiveness through the automation of manual tasks, the use of workflow to coordinate and monitor team activity, and integration between systems to exchange information and streamline processes.

POWERED BY
mortgage bench